



oklahoma  
complete health™

---

## Creating Health Opportunity Amid Oklahoma's Digital Divide

Samuel Karns

Telehealth and Rural Health Specialist

*Why we're in business*

## OUR PURPOSE

Transforming the health of the  
community, one person at a time

*What we do*

## OUR MISSION

Better health outcomes at lower costs

*What we represent*

## OUR PILLARS



Focus on the  
Individual



Whole  
Health



Active Local  
Involvement

*What drives our activity*

## OUR BELIEFS

We believe healthier individuals create more vibrant families and communities.

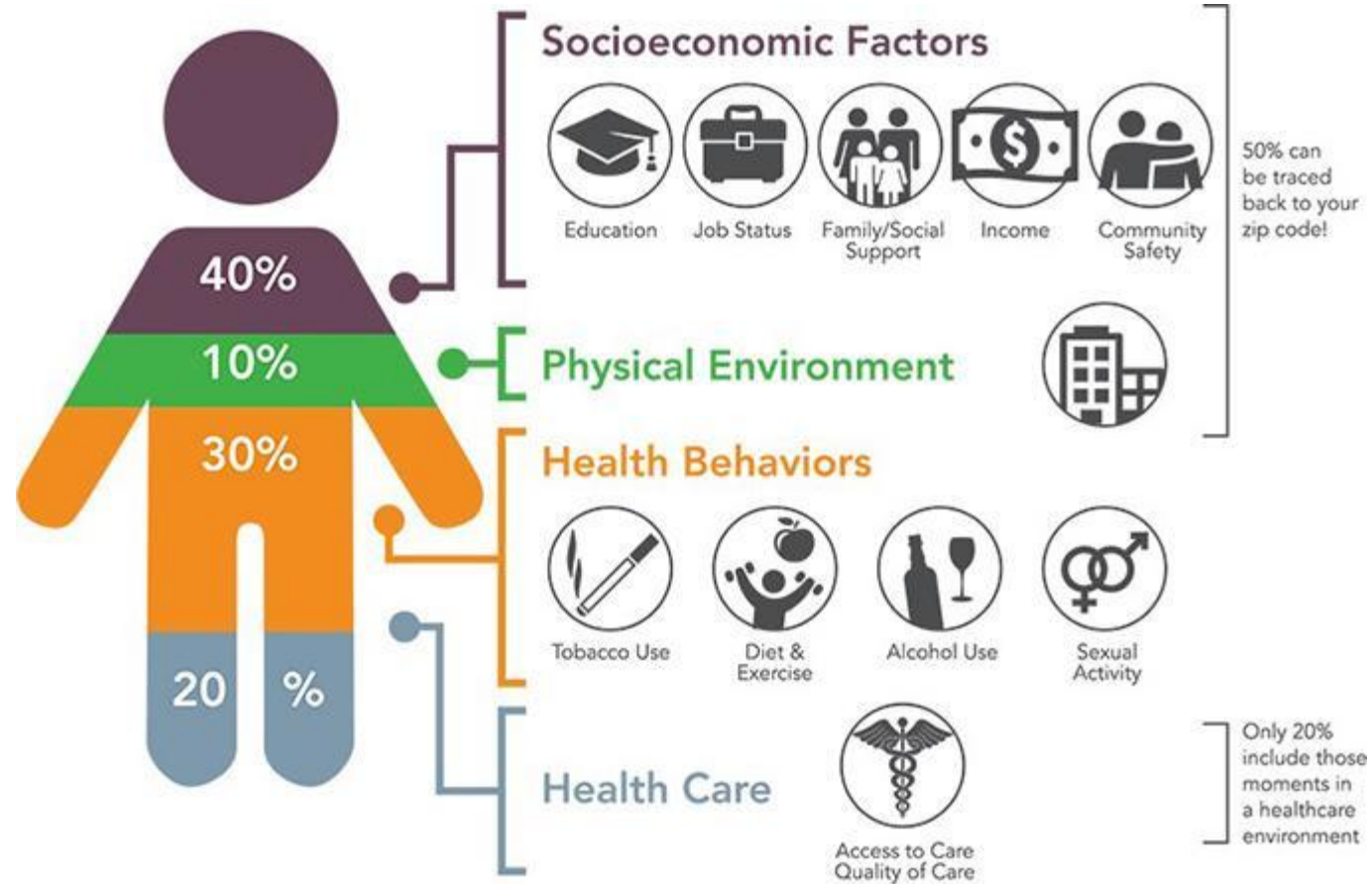
We believe treating people with kindness, respect and dignity empowers healthy decisions.

We believe we have a responsibility to remove barriers and make it simple to get well, stay well, and be well

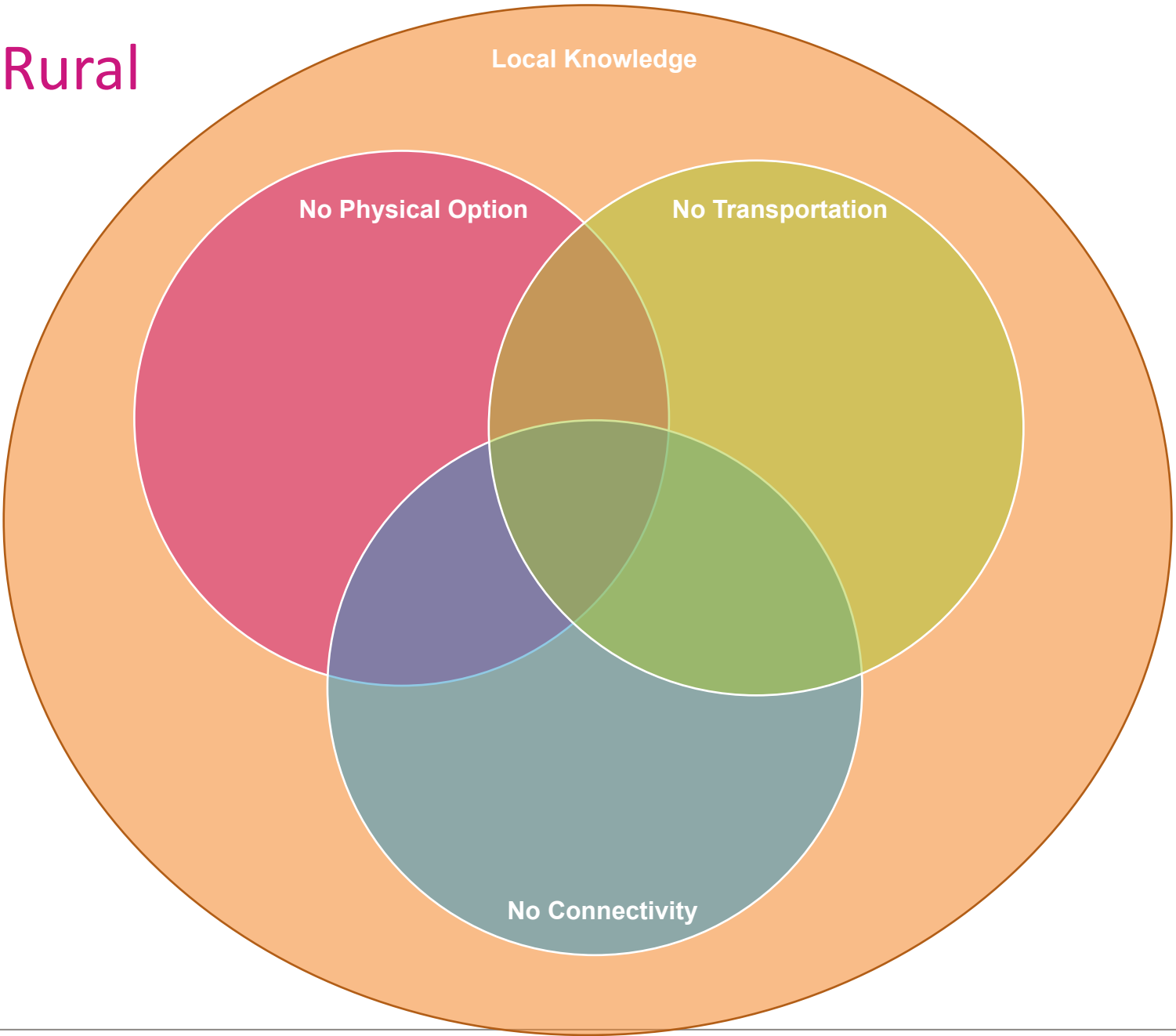
We believe in treating the whole person, not just the physical body.

We believe local partnerships enable meaningful, accessible healthcare.

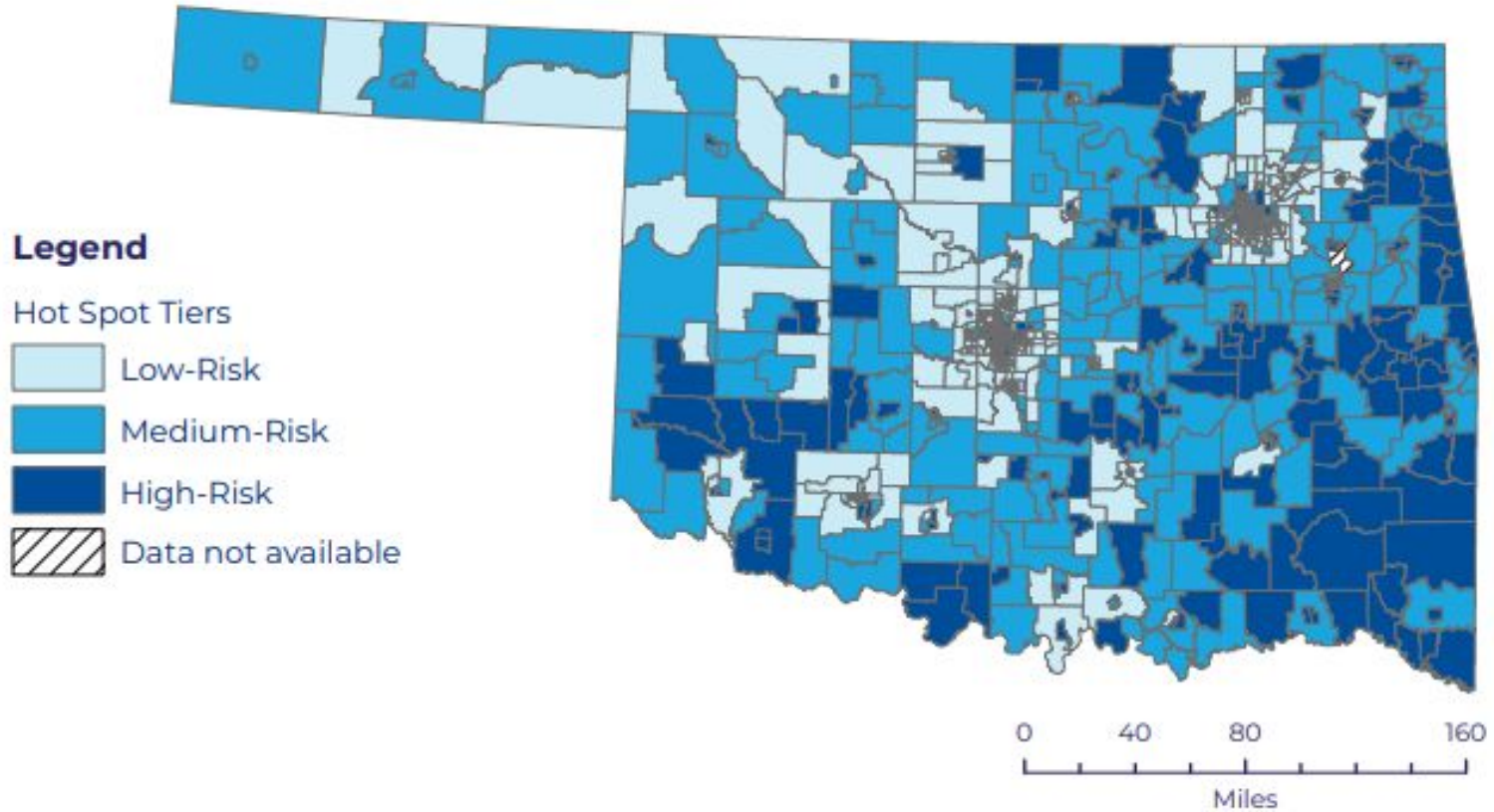
# Social Determinants of Health



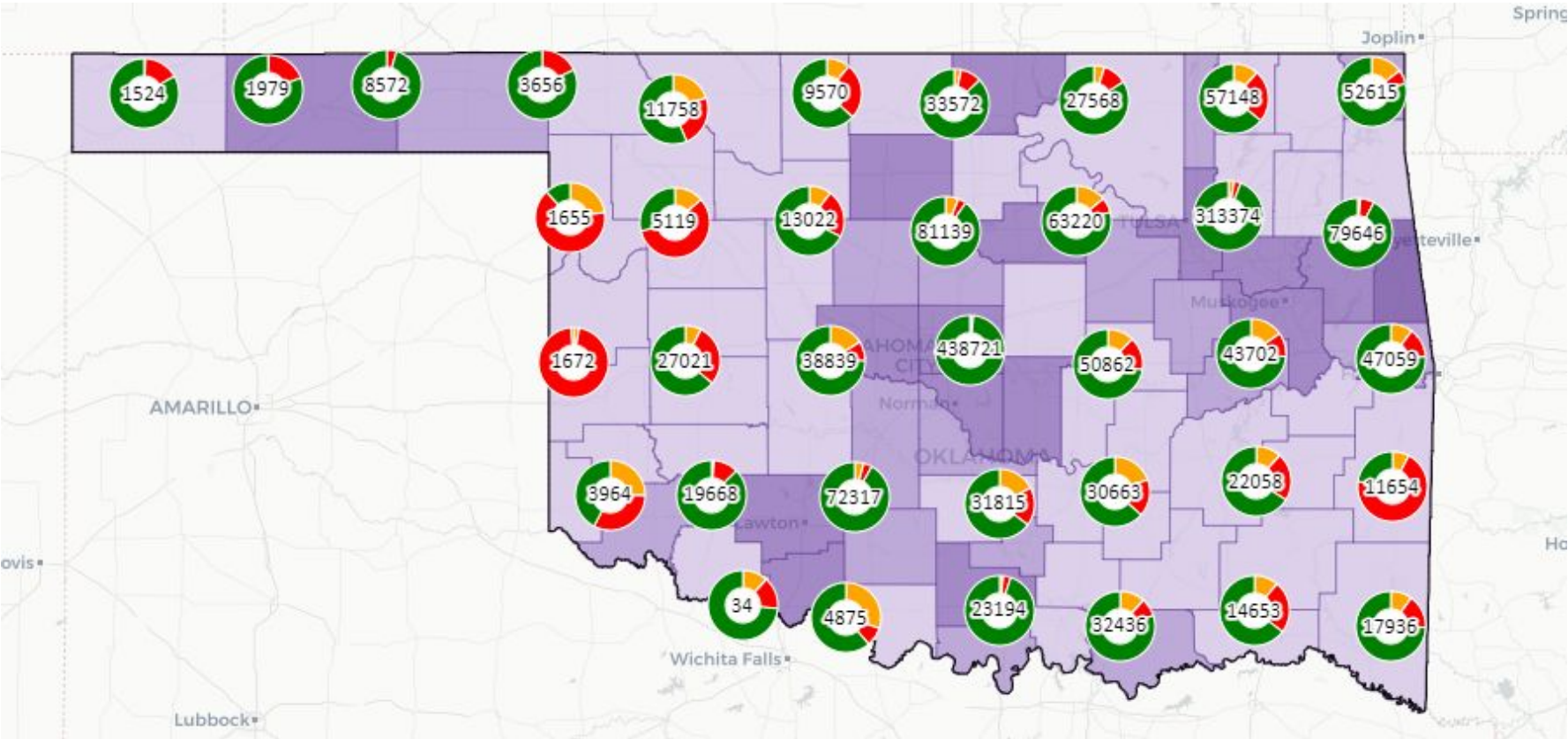
# Barriers to Rural Care



# State of Oklahoma Health Inequity Map



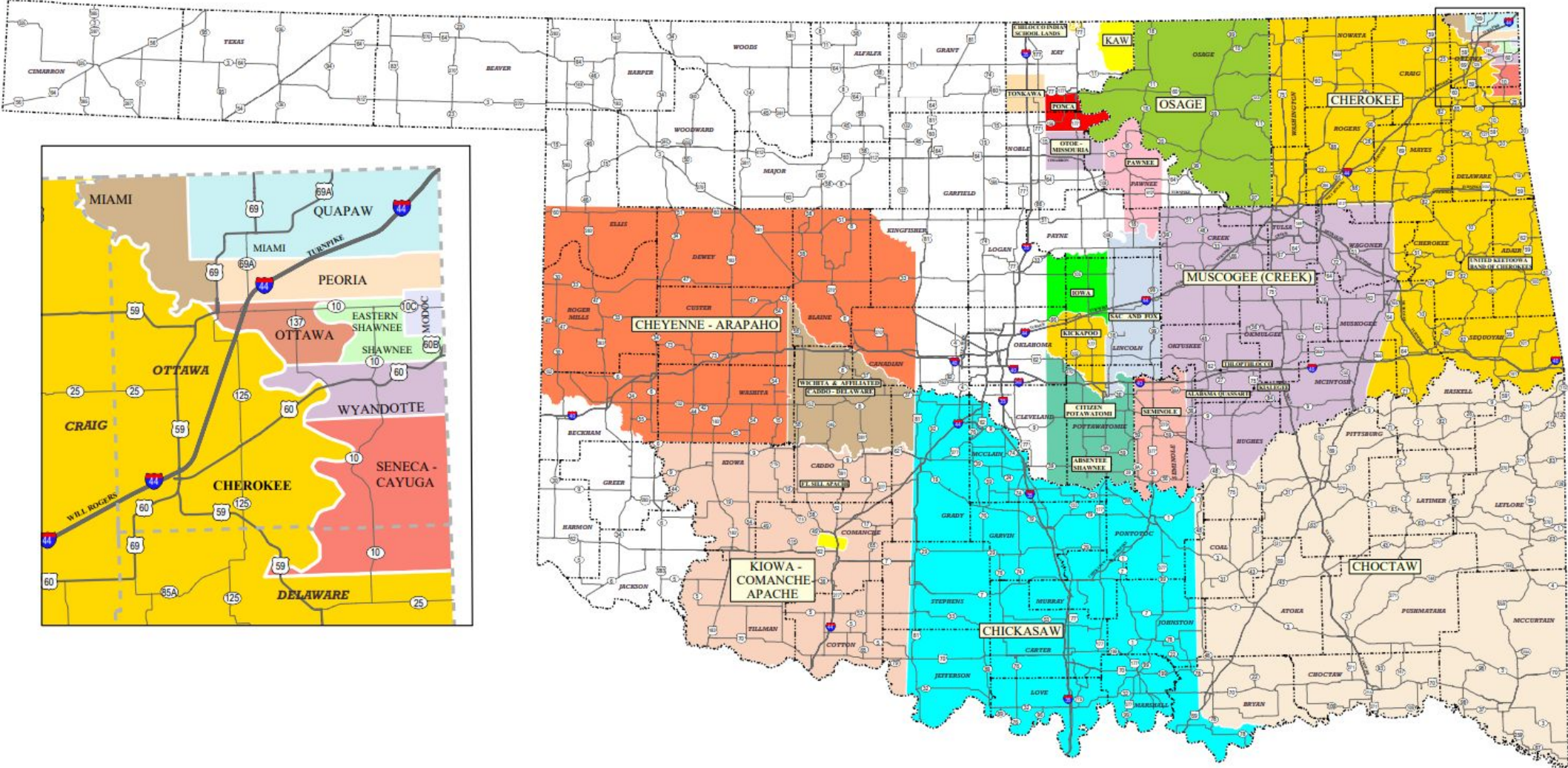
# State of Oklahoma Broadband Map



**Legend**

- Greater than 100/20 mbps
- Between 100/20 and 25/3 mbps
- Less than 25/3 mbps

# Tribal Jurisdictions in Oklahoma



# Telehealth Access Points

## Library Telehealth Booths

1. ADA compliant
2. Room for a caregiver
3. Partnerships with local providers/programs
4. Hybrid approach with trained digital navigators
5. Connectivity
6. Privacy
7. Pre-position remote diagnostic equipment
8. Scalable model, not library specific

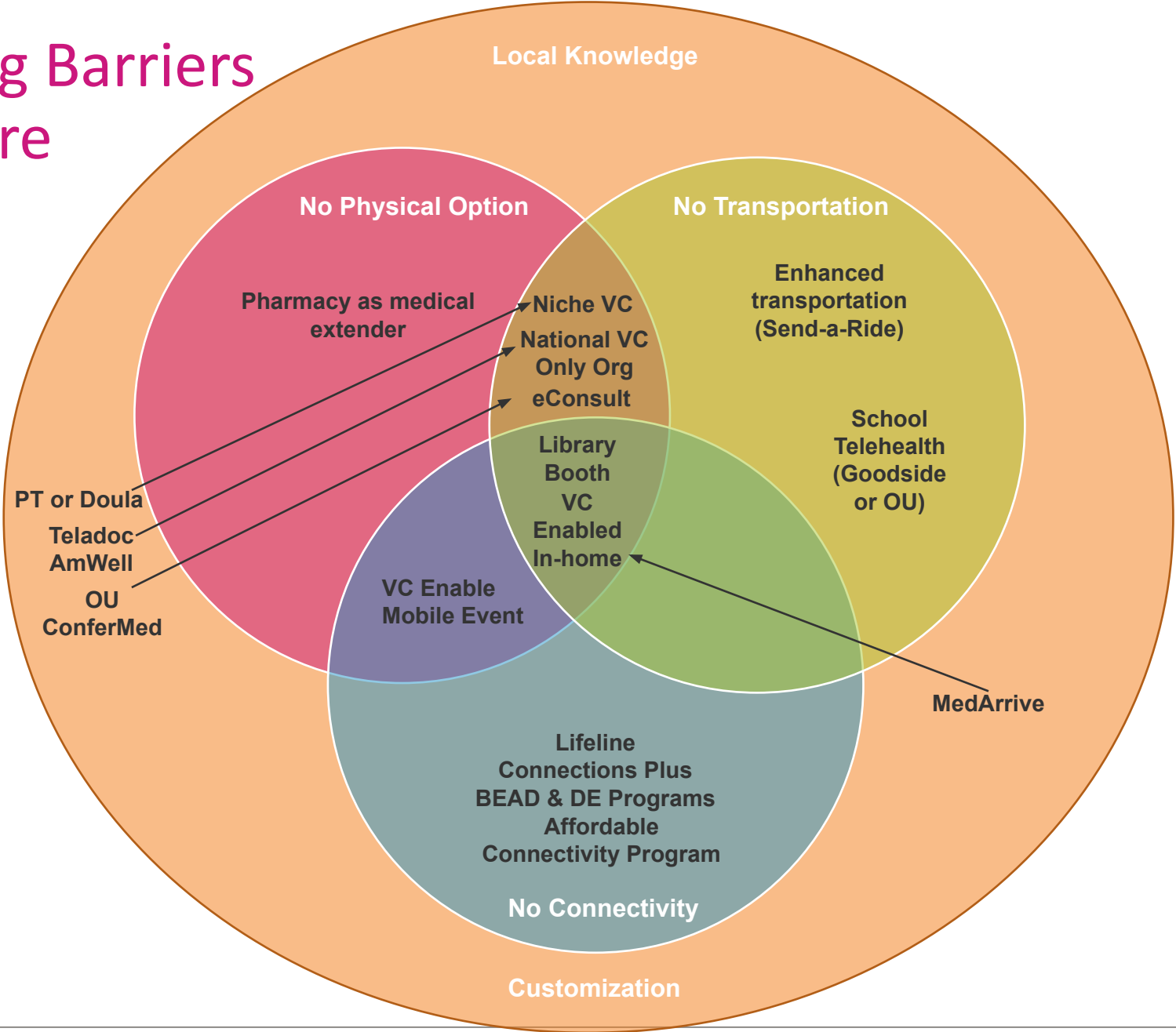


# Other Solutions

1. School Telehealth
2. Mobile Clinics, Health Fairs- VC enabled
3. In home visits- VC enabled
4. Hospital support (Tele-stroke, Tele-NICU)
5. eConsult expansion
6. Low bandwidth capable
  - Pyx-social isolation app
  - Asynchronous



# Overcoming Barriers to Rural Care



# Challenges to Deployment – Schools

---

- There are fewer than 400 school nurses covering 1800+ schools.
- Licensed medical assistants can only receive orders from a physician, while nurses can receive orders from nurse practitioner or physician. Telepresenters cannot do anything.
- Staff in schools are already too overwhelmed to manage programs without assistance from providers or the community



# Challenges to Deployment - Tribal

---

- Ensuring processes and procedures respect Tribal sovereignty and traditions. *It is strongly recommended that you consult a tribal liaison if looking to form partnerships.*
- Many tribal governments are at capacity with respect to grant management. They may prefer partnerships that are low-touch.
- Patience building relationships



# Challenges to Deployment – Connectivity

- Cell phone service is not reliable in rural areas, so Lifeline is not a catch-all for connectivity.
- The Affordable Connectivity Program sunseting will result in over 300,000 households potentially losing access.
- The healthcare industry needs to work with legislators to encourage more affordable internet plans so that telehealth can become ubiquitous.



---

Questions?

---

---

[Samuel.Karns@OklahomaCompleteHealth.com](mailto:Samuel.Karns@OklahomaCompleteHealth.com)

---