



The Importance of Digital Equity in Healthcare

Wednesday, May 22, 2024

Today's Agenda

1. Background information: what is digital equity?
2. Current state of digital equity
3. The relationship between digital equity and health
4. The Digital Equity Act

Speakers:

Hannah Buckland
Digital Equity Program Lead
hannah.buckland@state.mn.us

Anna Norcutt Preuss
Community Engagement + Special Projects Coordinator
anna.norcutt.preuss@state.mn.us

About Office of Broadband Development (OBD)

- Established by state legislature in 2013
- Executive Director: Bree Maki
- 1 deputy director; 1 program lead; 1 accounting lead; 7 grant administrators; 1 community engagement coordinator; 1 GIS specialist; 1 office manager

- Programs:

- Border-to-Border Broadband Development Grant Program
- Low-Density Broadband Development Grant Program
- Line Extension Program

These are specific to Minnesota. Eligible applicants are internet service providers.

- IJA: BEAD and DEA

Digital Equity

the **condition** in which all individuals and communities have the information technology capacity needed for full participation in our society, democracy, and economy

opportunities and options

SOURCE: National Digital Inclusion Alliance

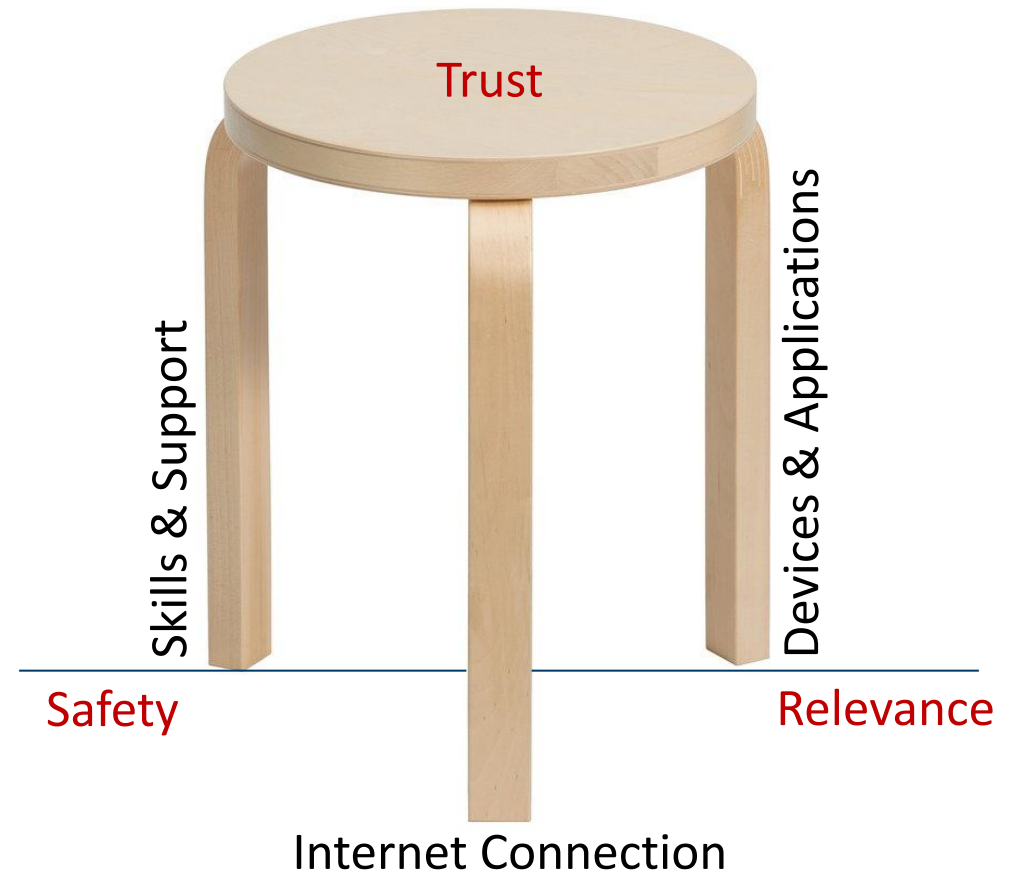
Components of Digital Inclusion

Who is using this stool?
Why are they using this stool?
Why aren't they using this stool?
Is one stool enough?
Would they benefit from a seatback?
Do they want armrests?
What is this stool standing on?
What is the stool made of?
Who built the stool?
Is this stool sturdy?



Components of Digital Inclusion

Who is using this stool?
Why are they using this stool?
Why aren't they using this stool?
Is one stool enough?
Would they benefit from a seatback?
Do they want armrests?
What is this stool standing on?
What is the stool made of?
Who built the stool?
Is this stool sturdy?

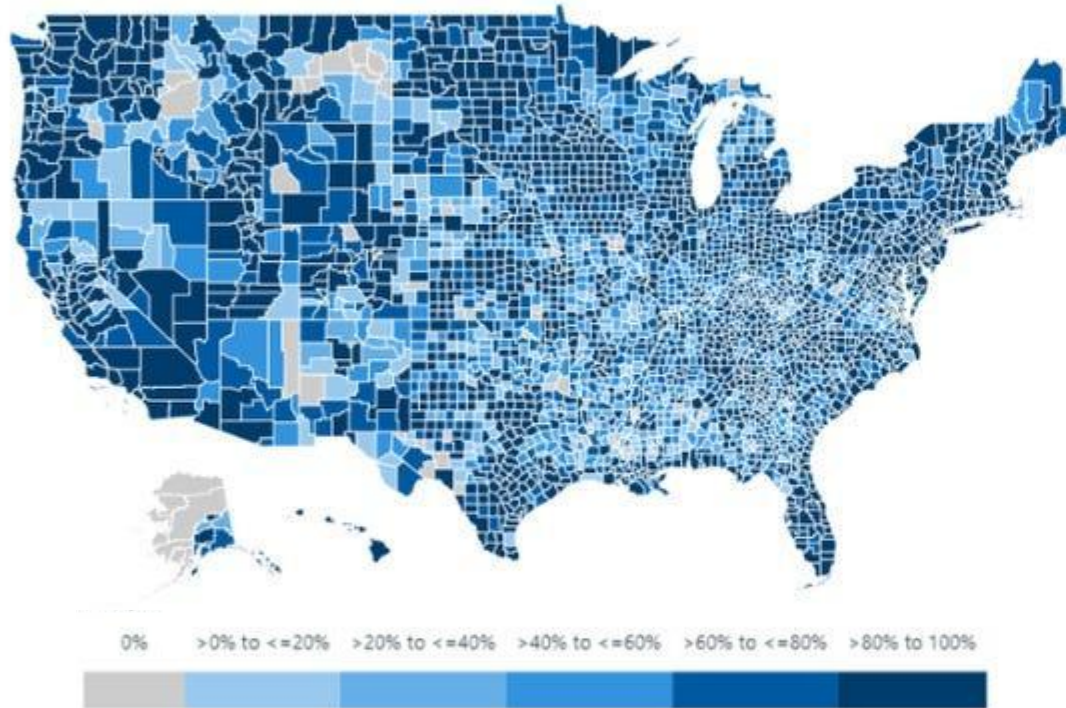


Today's Agenda

- ~~1. Background information: what is digital equity?~~
2. Current state of digital equity
3. The relationship between digital equity and health
4. The Digital Equity Act

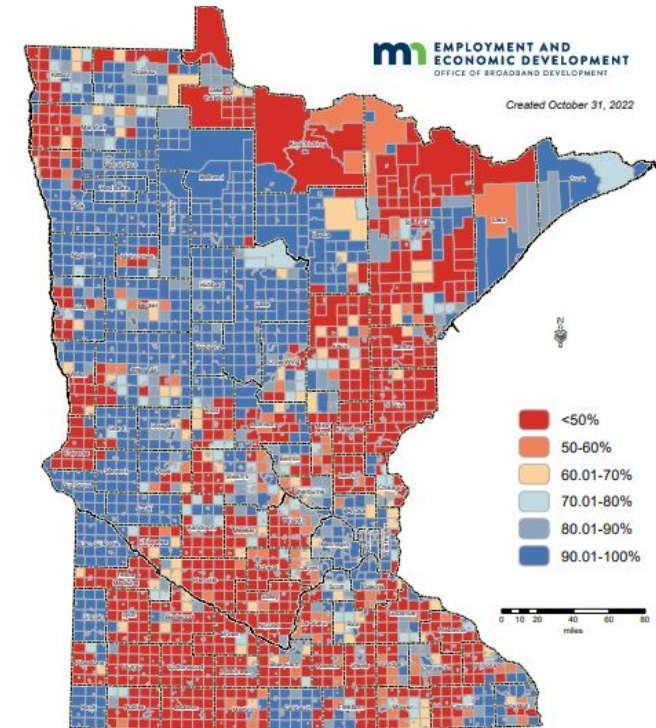
Current State of Digital Opportunity: Availability

Counties: Fixed service at or above 25/3



SOURCE: Federal Communications Commission.

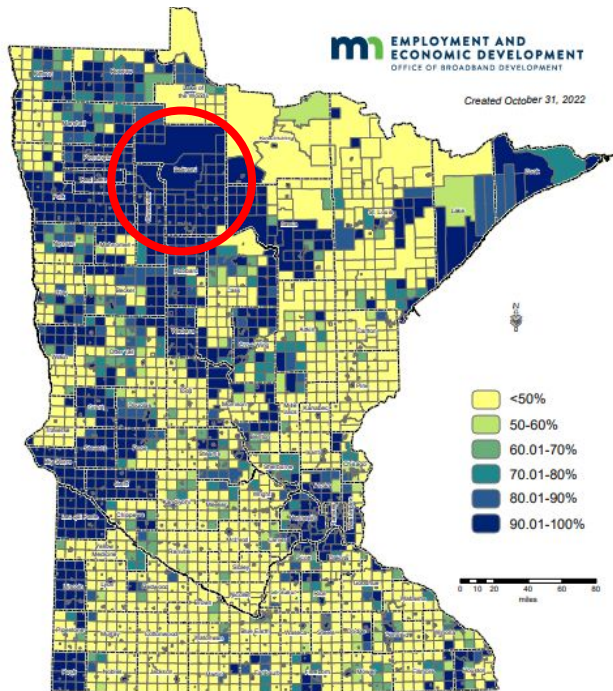
Townships: Fixed service at or above 25/3



SOURCE: MN Office of Broadband Development.

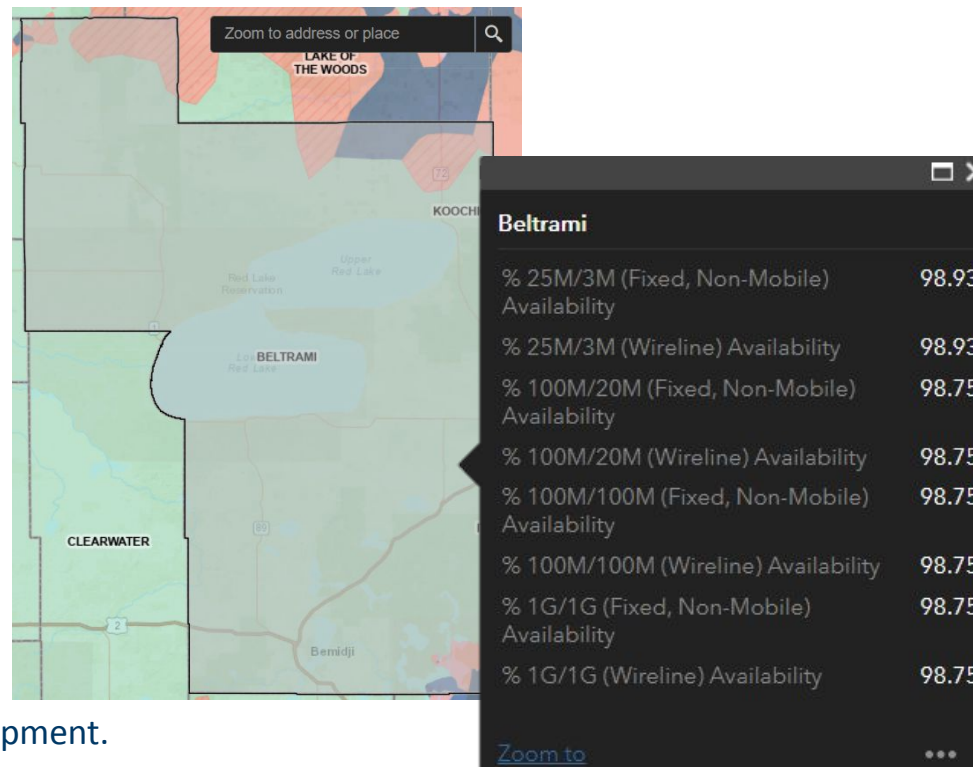
Maps Tell Us One Part of One Story

Townships: Fixed service > 100/20

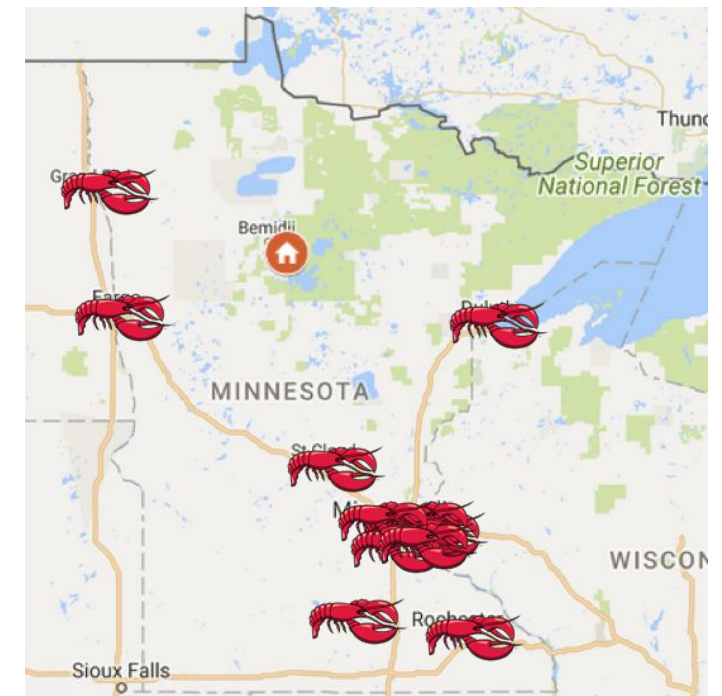


SOURCE: MN Office of Broadband Development.

Beltrami County: Fixed service > 100/20

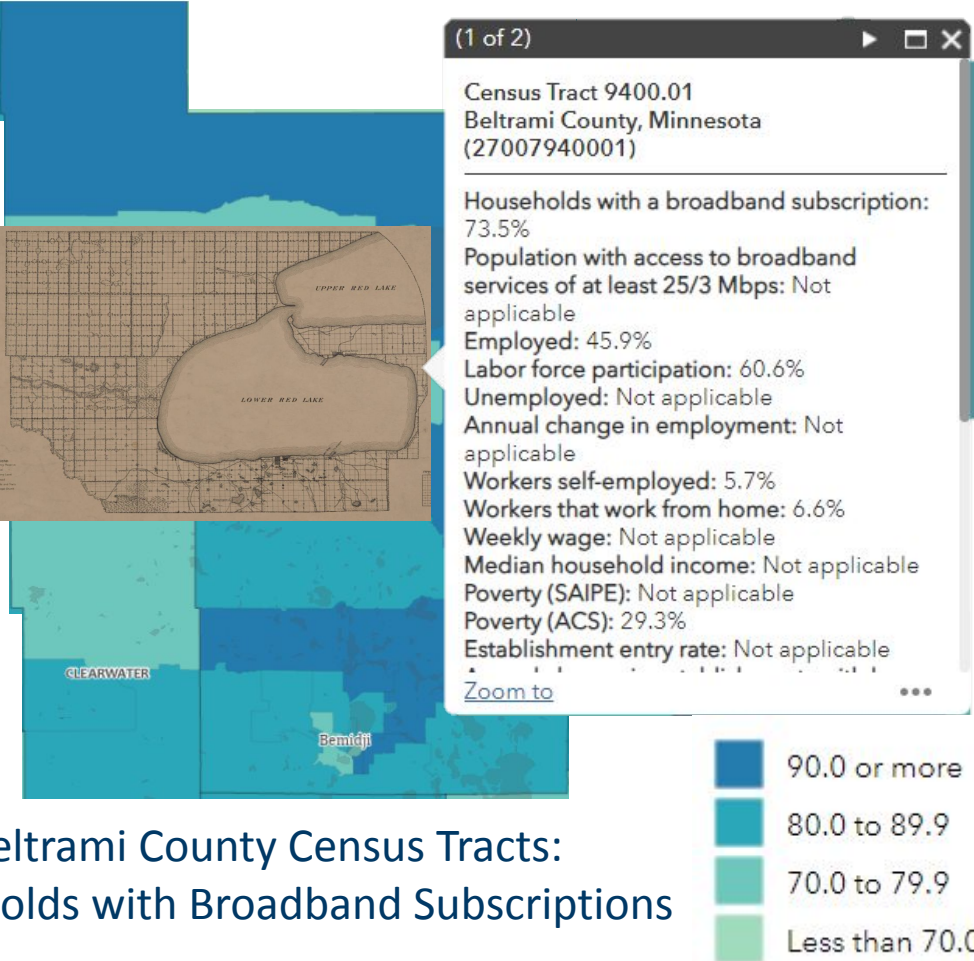


The Red Lobster Ruralness Metric®



SOURCE: Red Lobster.

Access is Complex



Beltrami County Census Tracts:
Households with Broadband Subscriptions



BROADBAND MAP SOURCE: U.S. Census Bureau, ACCESS BROADBAND Dashboard.
HISTORICAL MAP SOURCE: University of Minnesota.

Broadband Subscriptions vs. Mobile Data

Group of People	Broadband Subscription	Mobile Data Only
All MN Households	83.7%	10.9%
People Living in Greater MN	66.8%	12.2%
Adults Ages 60+	79.6%	11.8%
People from Minoritized Racial/Ethnic Groups	78.5%	17.4%
Veterans	81.5%	10.2%
People with Disabilities	79.0%	10.8%
People Experiencing Language Barriers	65.3%	21.5%
People Living Under 150% Poverty	75.4%	19.0%

SOURCE: 2017-22 American Community Survey, retrieved from IPUMS.

Computers vs. Smartphones

Group of People	Laptop or Desktop	Smartphone Only
All Minnesotans	82.1%	7.0%
People Living in Greater MN	77.6%	8.2%
Adults Ages 60+	77.4%	6.0%
People from Minoritized Racial/Ethnic Groups	78.4%	17.2%
Veterans	81.0%	5.8%
People with Disabilities	69.8%	10.3%
People Experiencing Language Barriers	63.0%	28.6%
People Living Under 150% Poverty	68.5%	19.2%

SOURCE: 2017-22 American Community Survey, retrieved from IPUMS.

MN Residents: By Birthplace

Birthplace	Internet Subscription	Laptop or Desktop	Smartphone	Smartphone Only
In U.S.	93.3%	87.4%	92.4%	8.8%
Outside U.S.	92.9%	82.6%	95.2%	9.0%

Africa	92.3%	77.1%	96.2%	20.9%
Asia	95.0%	89.4%	96.4%	8.5%
Central/South Am.	90.3%	75.8%	93.9%	20.5%
Europe	93.4%	89.6%	91.7%	6.5%

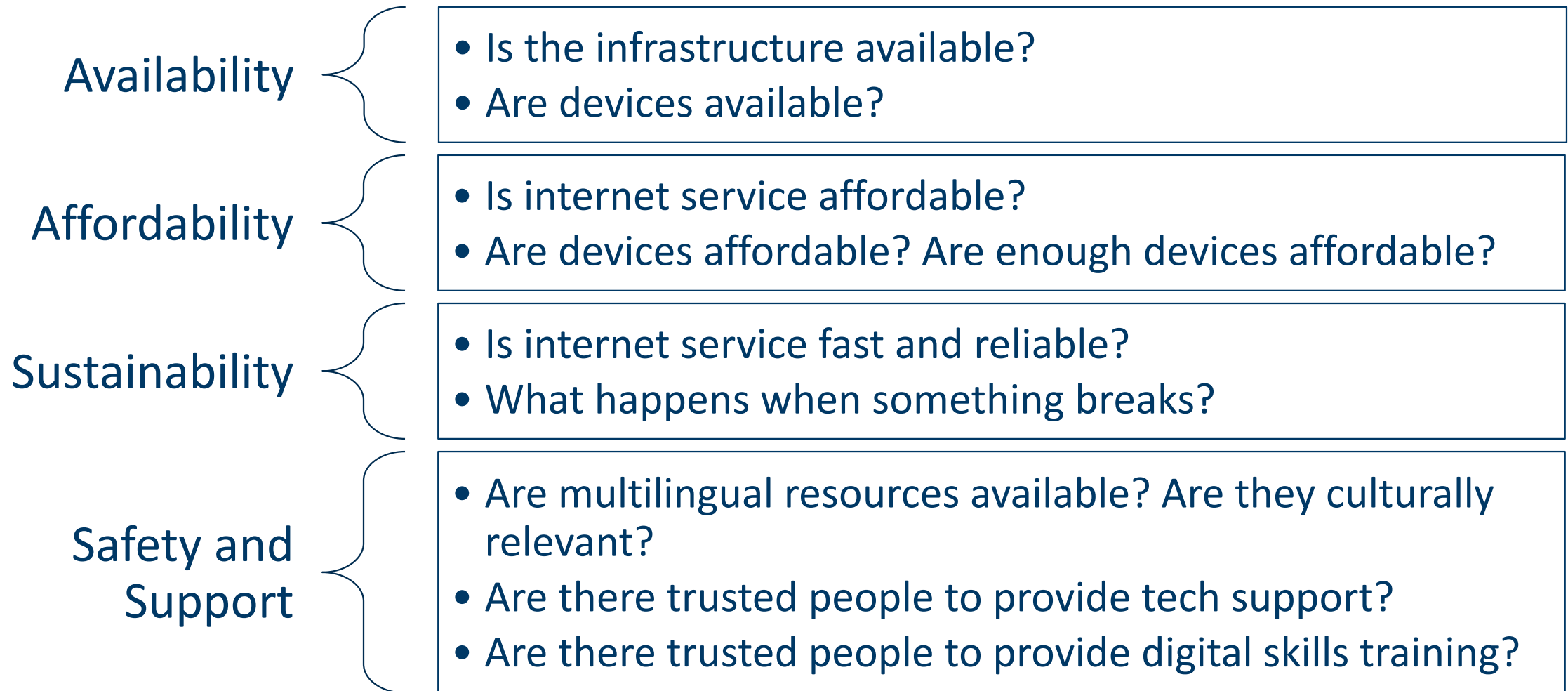
SOURCE: 2017-22 American Community Survey, retrieved from IPUMS.

MN Residents: By English Language Skills

	Internet Subscription	Laptop or Desktop	Smartphone	Smartphone Only
Speaks English Well	93.2%	87.3%	92.3%	9.0%
Speaks A Little English	88.0%	70.7%	93.0%	24.6%
Speaks No English	87.4%	57.7%	87.4%	30.5%

SOURCE: 2017-22 American Community Survey, retrieved from IPUMS.

The Biggest Barriers



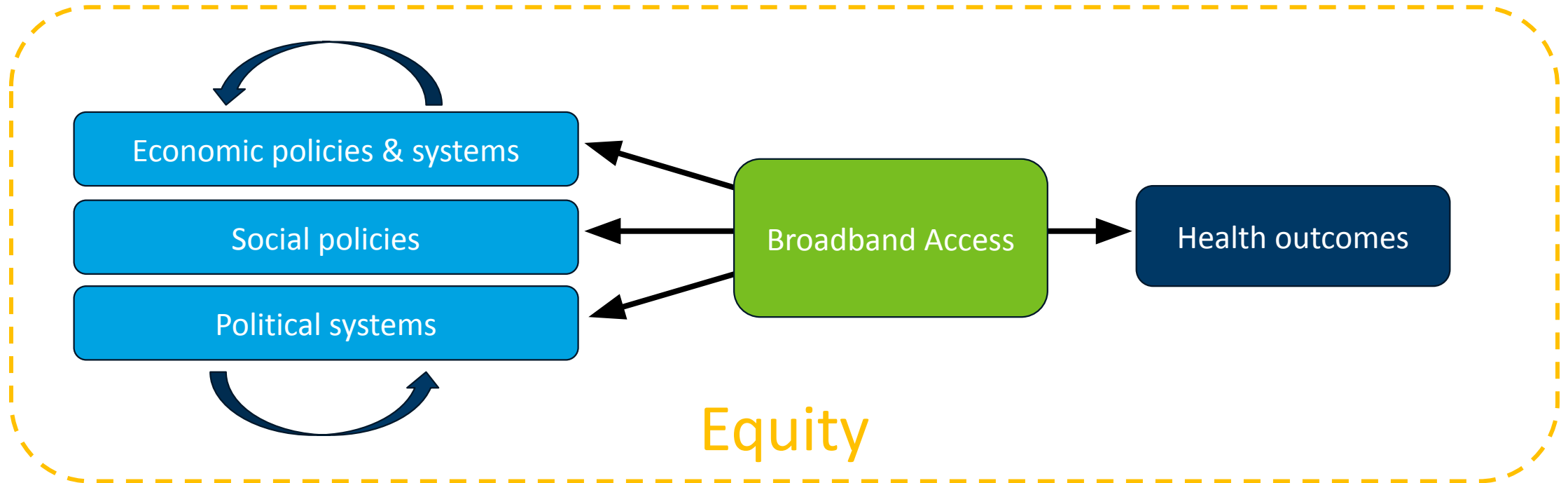
Today's Agenda

- ~~1. Background information: OBD, HJA, and other acronyms~~
- ~~2. Current state of digital equity~~
3. The relationship between digital equity and health
4. The Digital Equity Act

Health Determinants & Broadband Access

Social determinants of **health**

Influence health outcomes through **day-to-day conditions** and **systems** that shape people's lives



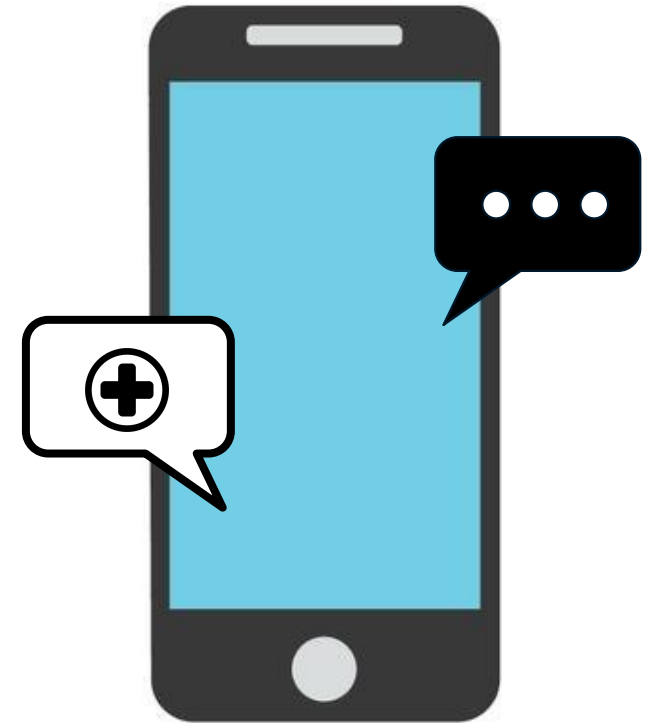
SOURCES: CDC'S SOCIAL DETERMINANTS OF HEALTH; Lawrence (2022)

“...Broadband plays a more direct and consequential role—as a **social determinant of health**, if not as a **‘super’ determinant of health**”

– Federal Communications Commission’s
Connect2HealthFCC Task Force

Broadband as a “Super” Determinant of Health

- **Broadband access serves telehealth as:**
 - A way to connect providers to their patients
 - Reduce the burdens of distance and time
- **Broadband access can improve health outcomes through:**
 - Addressing gaps in mental health and substance use treatment
 - Improving rates of chronic disease
 - Making treatment services more accessible



SOURCE: SAMSHA's [Digital Access: A Superdeterminant of Health](#); FCC's [Mapping Broadband Health in America](#); [Truong et al., \(2022\)](#)

Digital Equity Initiatives in Healthcare

Libraries Health Connect

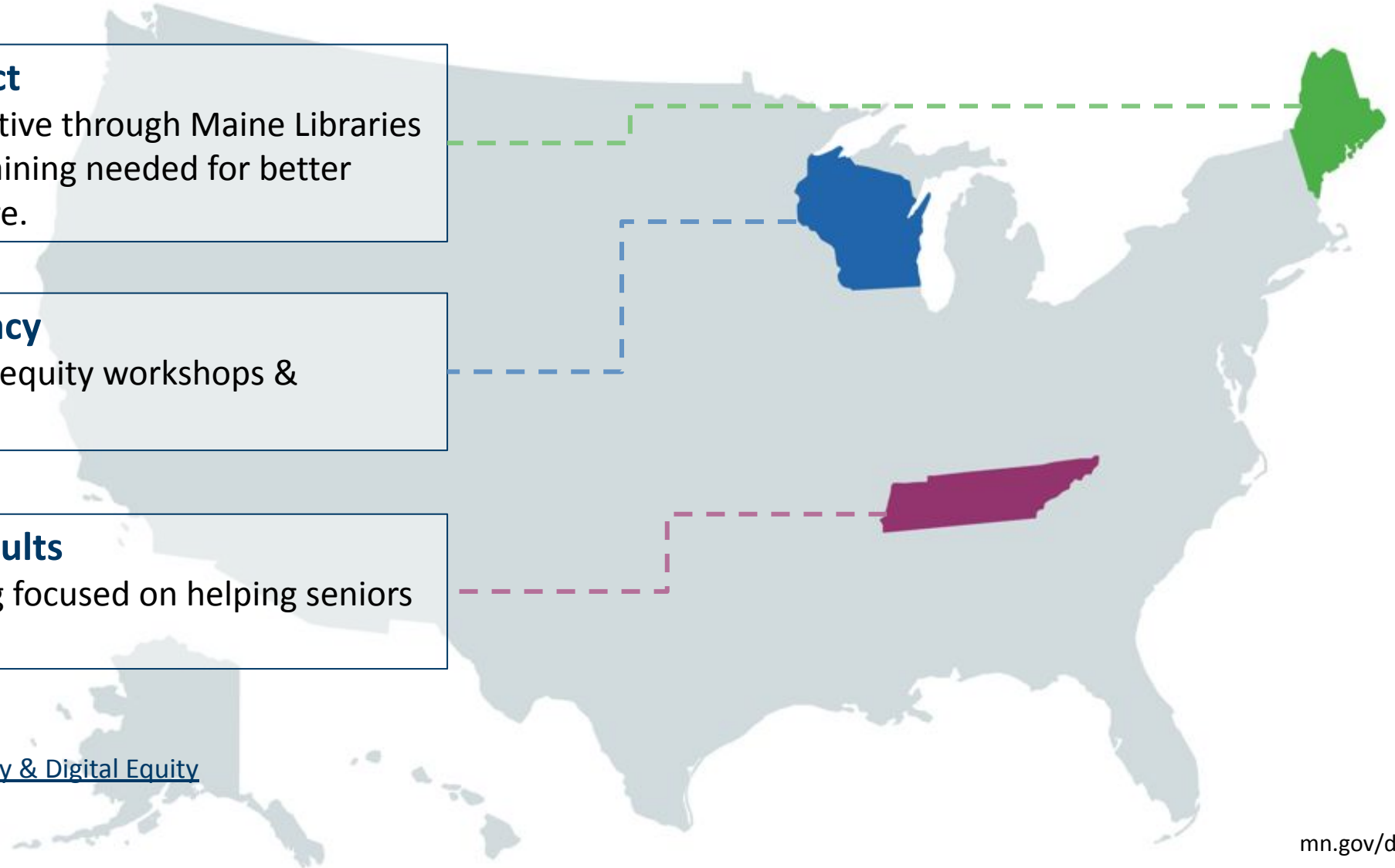
Statewide telehealth initiative through Maine Libraries providing technology & training needed for better access to quality healthcare.

Wisconsin Health Literacy

Coalition providing health equity workshops & trainings.

Telehealth for Older Adults

Program providing training focused on helping seniors develop basic digital skills.



SOURCE: NTIA's [Health Equity & Digital Equity](#)

Today's Agenda

- ~~1. Background information: OBD, HJA, and other acronyms~~
- ~~2. Current state of digital equity~~
- ~~3. The relationship between digital equity and health~~
4. The Digital Equity Act

Digital Equity Act: The Basics

- Included in Bipartisan Infrastructure Law (November 2021); administered by National Telecommunications and Information Administration (NTIA)
- Provides \$2.75B for digital equity work
- Three funding categories:
 - \$60M in planning grants to states, tribes, and territories (MN = \$881,905.10)
 - \$1.44B in *capacity grants* to states, tribes, and territories (MN = \$12,033,288.01)
 - \$1.25B in competitive grants to regional organizations, anchor institutions, etc.



Beyond Spring 2024



- May 28 States submit *Round 1 Capacity Grant* application to NTIA
- Sept. 2024 States receive *Round 1 Capacity Grant* funds; NTIA launches round 1 Competitive Grants
- Nov. 2024 OBD begins rolling out grants to MN places/orgs using the *Round 1 Capacity Grant* funds
- Mid-2025 NTIA awards *Round 2 Capacity Grant* to states
- Mid-2026 NTIA awards *Round 3 Capacity Grant* to states

For More Information

Minnesotans

1. Check out MN's digital opportunity webpage: tiny.cc/OBDinclusion
2. Subscribe to OBD's biweekly newsletter: tiny.cc/OBDnews
3. Ask: hannah.buckland@state.mn.us

The Rest of You

1. Say hi your state broadband office staff: broadbandusa.ntia.gov
2. Meet your state's federal program officer: broadbandusa.ntia.gov
3. Ask: hannah.buckland@state.mn.us