



**EOMC**  
Eastern Oklahoma  
Medical Center

# TRANSFORMING SCHOOL- BASED TELEHEALTH THROUGH RURAL PARTNERSHIPS

Tiffany Griffis, DNP APRN FNP-C



# AGENDA



- About EOMC
- Program Vision
- Development of Program
- Impact
- Community Partnerships



# EOMC

- Located in Leflore County
  - Poteau, OK
  - Population 49,731
  - Over 1600 square miles
- County Owned
- Non-Profit
- Founded in 1950's
- 2015 Critical Access Designation
- 2015 Rural Health Clinic Designation
- HPSA Designated Area
- 17 School Districts



**EOMC**  
Eastern Oklahoma  
Medical Center



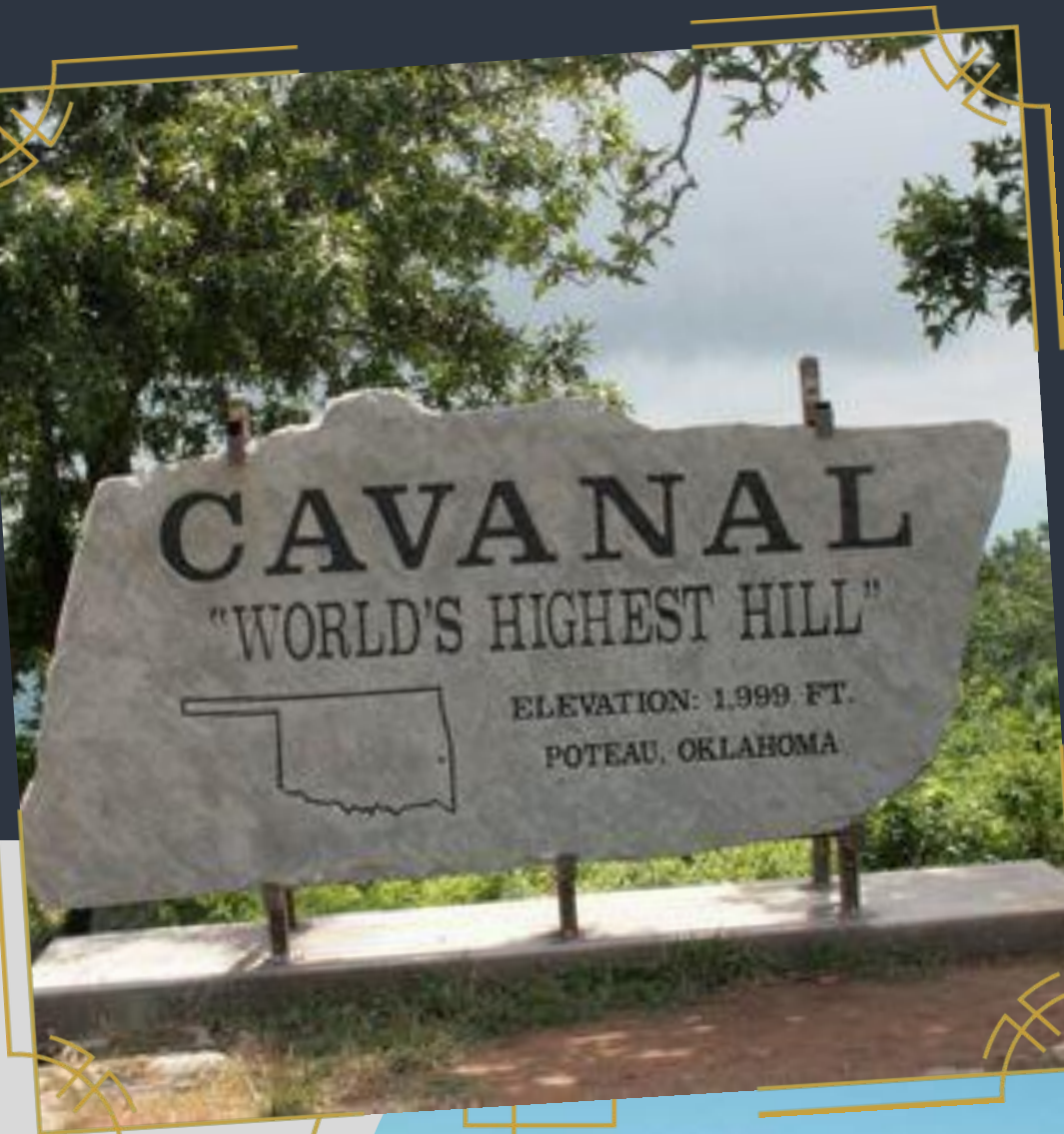
# Poteau, Oklahoma

## World's Highest Hill

- Elevation: 1,999 ft

## Poteau Balloon Fest

- Oklahoma's longest running balloon festival





# SCHOOL TELEHEALTH PROGRAM VISION



Improve and promote the availability of healthcare in rural and underserved areas



Reduce barriers to care that exist in rural communities



Improve access to care and convenience to patients



**EOMC**  
Eastern Oklahoma  
Medical Center



# DEVELOPMENT OF PROGRAM

## CHALLENGES

- Legislative
- Trust
- School Buy-In



## PROCESS

- RHC visit
- School Nurse (host)
- Consent
- Nurse Practitioner evaluation
- Prescription



# Population Served & Services Offered

- Students and Faculty
    - 50/50 mix
    - Higher percentage of elementary age
- 

- Medical Evaluation
- On-site Testing
  - Strep A
  - Influenza
- Prescription
- Health Education





# IMPACT OF PROGRAM



Improved  
Access to  
Care



Reduced  
Absenteeism



School  
Financials



Education  
Continuity



# COMMUNITY PARTNERSHIPS & FUNDING



## Funding Opportunities

- Local Banks
- Civic Organizations



## Grant Partnerships

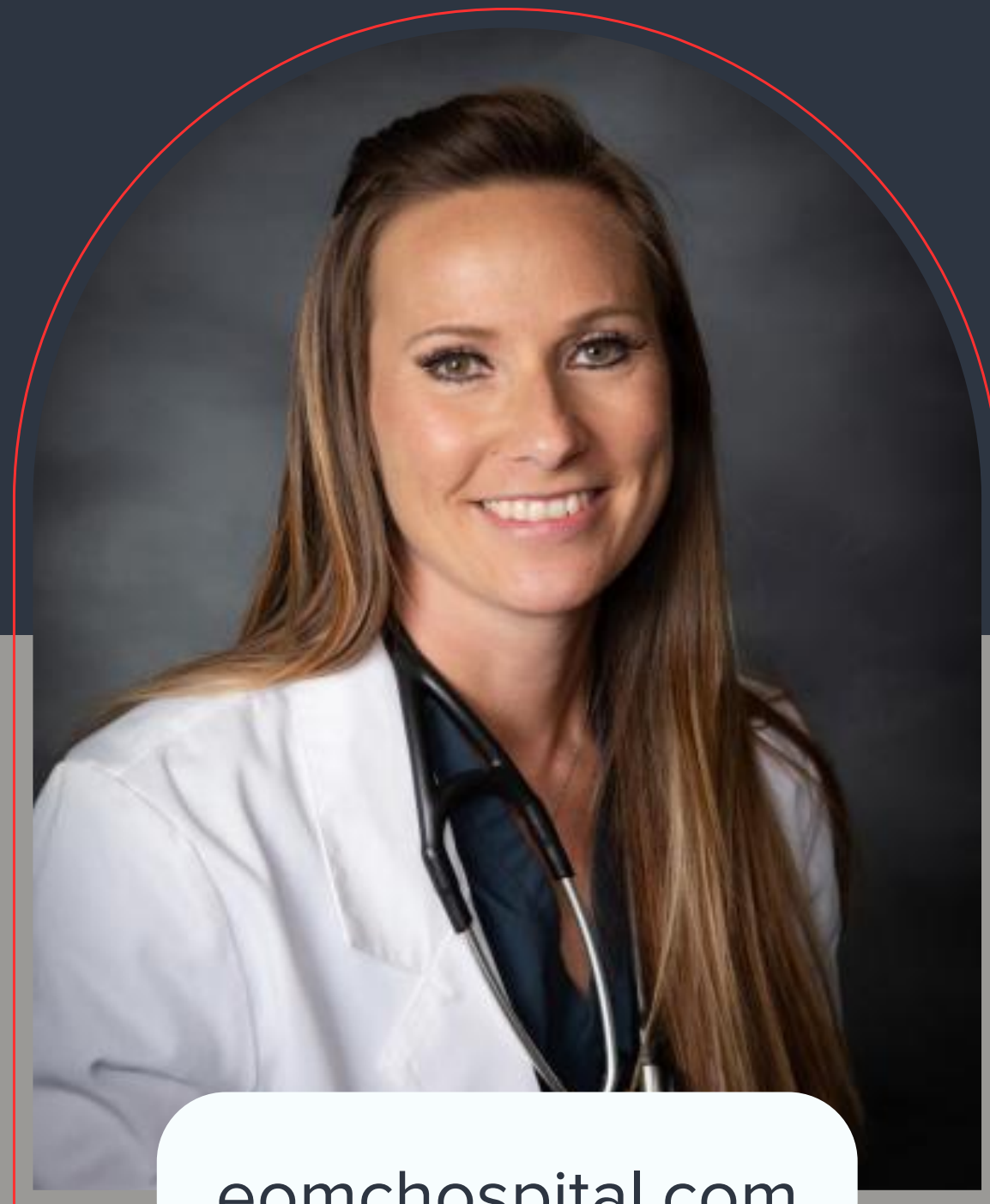


## Out of the box thinking



**EOMC**  
Eastern Oklahoma  
Medical Center





[eomchospital.com](http://eomchospital.com)

# Tiffany Griffis, DNP

## APRN

Chief Executive Officer

Eastern Oklahoma Medical Center

[tgriffis@eomchospital.com](mailto:tgriffis@eomchospital.com)



**EOMC**  
Eastern Oklahoma  
Medical Center