

2025 Telehealth Technology Trends

Jordan Berg

Principle Investigator

Telehealth Technology Assessment Center

jjberg@anthc.org

**Presented for
Telehealth Everywhere 2025
April 23, 2025**



Who is TTAC?

TTAC is federally funded through the **Office for the Advancement of Telehealth (OAT)**

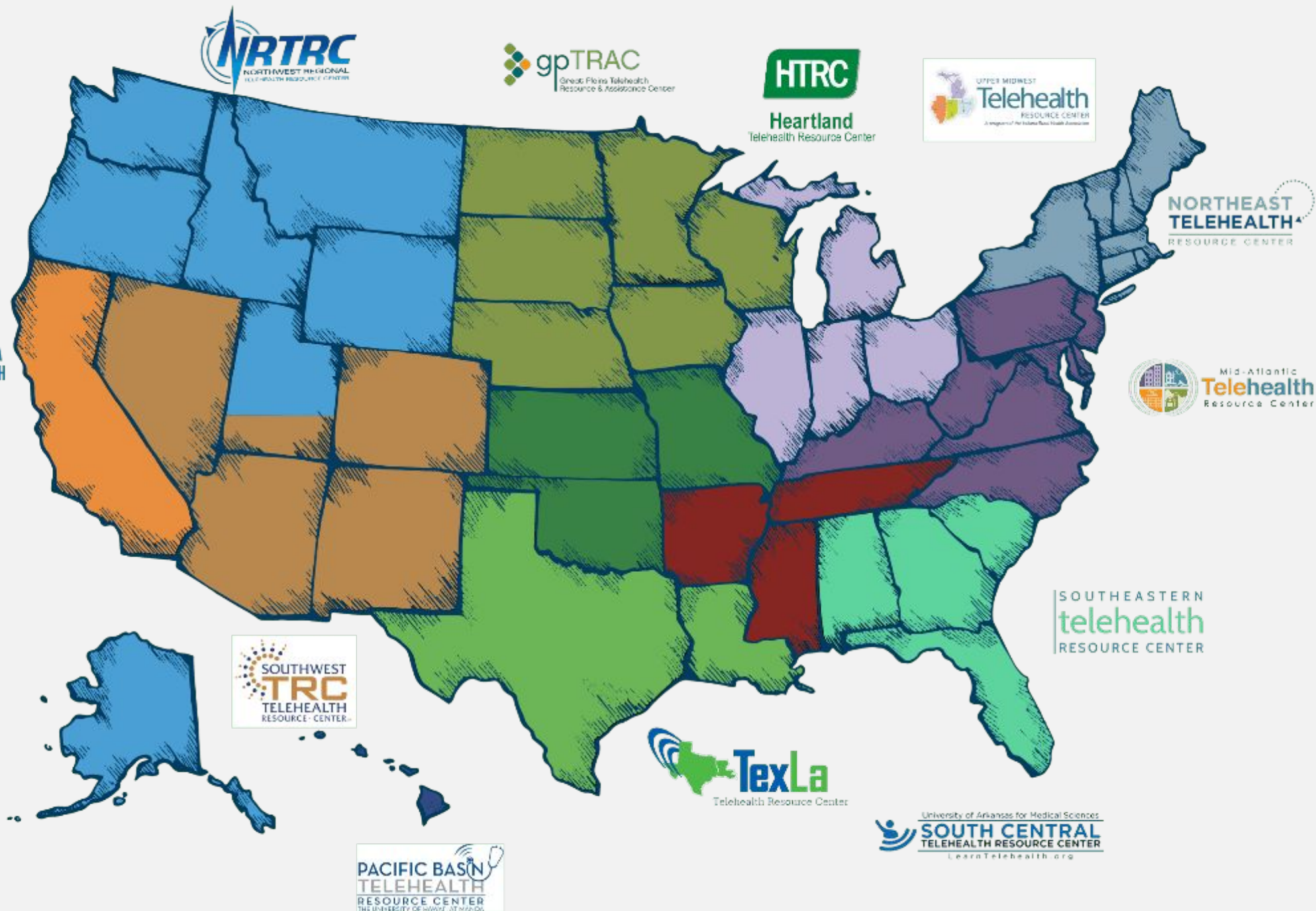
TTAC provides Technology Assessment services to the 12 regional TRCs as well as the other national TRC.



National Consortium of Telehealth Resource Centers

Our website hosts many resources. If you can't find what you're looking for, contact your regional TRC:

www.TelehealthResourceCenter.org



What do we do?



Technical Assistance:

Individual
Organizational



Website Resources:

Innovation Watch
Technology Overviews
Technology Toolkits



Projects:

Telehealthbroadbandproject.com



Technology Demonstrations

Virtual
Technology Showcase



What We're Watching: 2025 Telehealth Tech Trends

- Evolving Endpoints
- AI in everything- for better or worse
- Home and Hospital- Care Locations of the Future
- Connecting America- Broadening Broadband



AI in everything- for better or worse

- “AI” in Everything
- Sales Buzzword
- Robotics and AI companions
- AI for Nursing and EHR workflows
- Edge AI for Audio Video



Hype Cycle for Artificial Intelligence, 2024



Source: Gartner
Commercial reuse requires approval from Gartner and must comply with the Gartner Content Compliance Policy on [gartner.com](https://www.gartner.com/content-compliance-policy).
© 2024 Gartner, Inc. and/or its affiliates. All rights reserved. GT5_3282450

Gartner



Define AI

Clarify what "AI"
really means



Assign Jobs

Make tasks clear and
bounded for safety



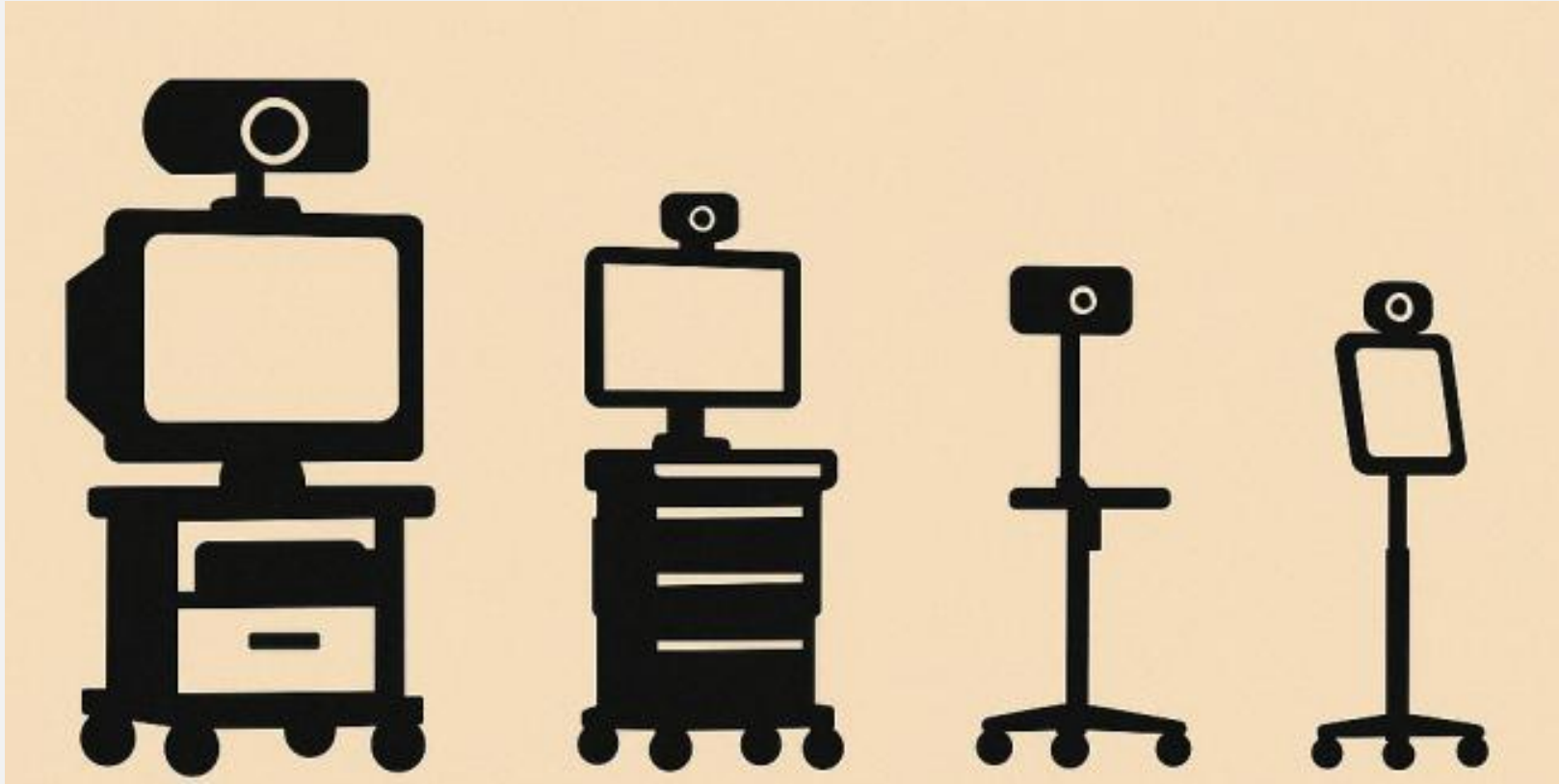
Build Guardrails

Data rules, human review
and transparency

AI Trends

- “What do you mean by AI”
- Good AI’s need well-defined jobs (for now)
- Policy and Data Governance need to race to keep up

Evolving Endpoints





Endpoint Trends

- Portability
 - Wireless, cellular, satellite connectivity
 - Non-outpatient care settings
- Reduced complexity
- Non-Cart form factors
 - Kiosks, Tablets, All-In-One solutions

Home and Hospital – Care Locations of the Future

- Inpatient Telemedicine
 - Tele-sitting
 - Tele-ICU
 - Fall detection/prevention
 - Ambient Vitals Collection
- Products as Environments
 - Service on demand
 - Cloud based
 - Integration with EHR



hellocare.ai

*AI-Enhanced inpatient room
with Alexa voice command*

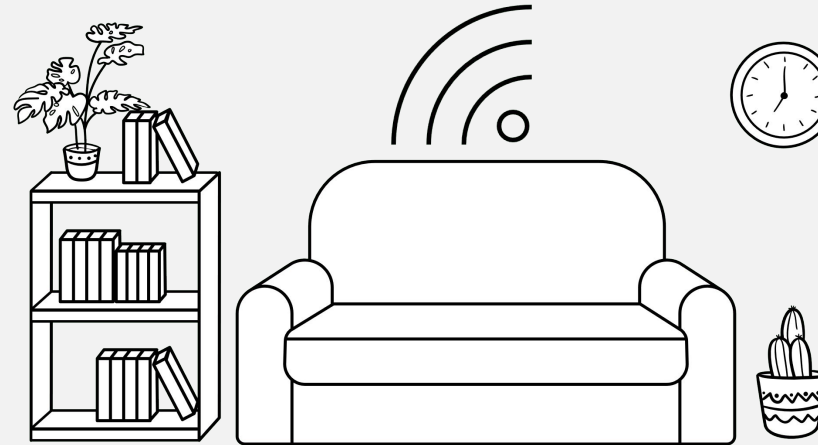
Home and Hospital – Care Locations of the Future

Patient Mobile

Last line of connectivity

Community Telemedicine

Bringing care to the patient



Primary Care at Home

Care where patients live

Consumer Health Tech & Improved Patient Data:

Patient-generated insights supporting clinical decisions.

Home and Hospital – Care Locations of the Future

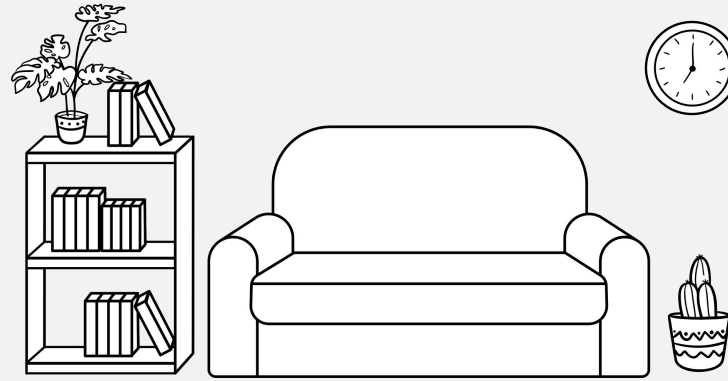
Continuous Glucose Monitors (CGM)



FreeStyle Libre 3



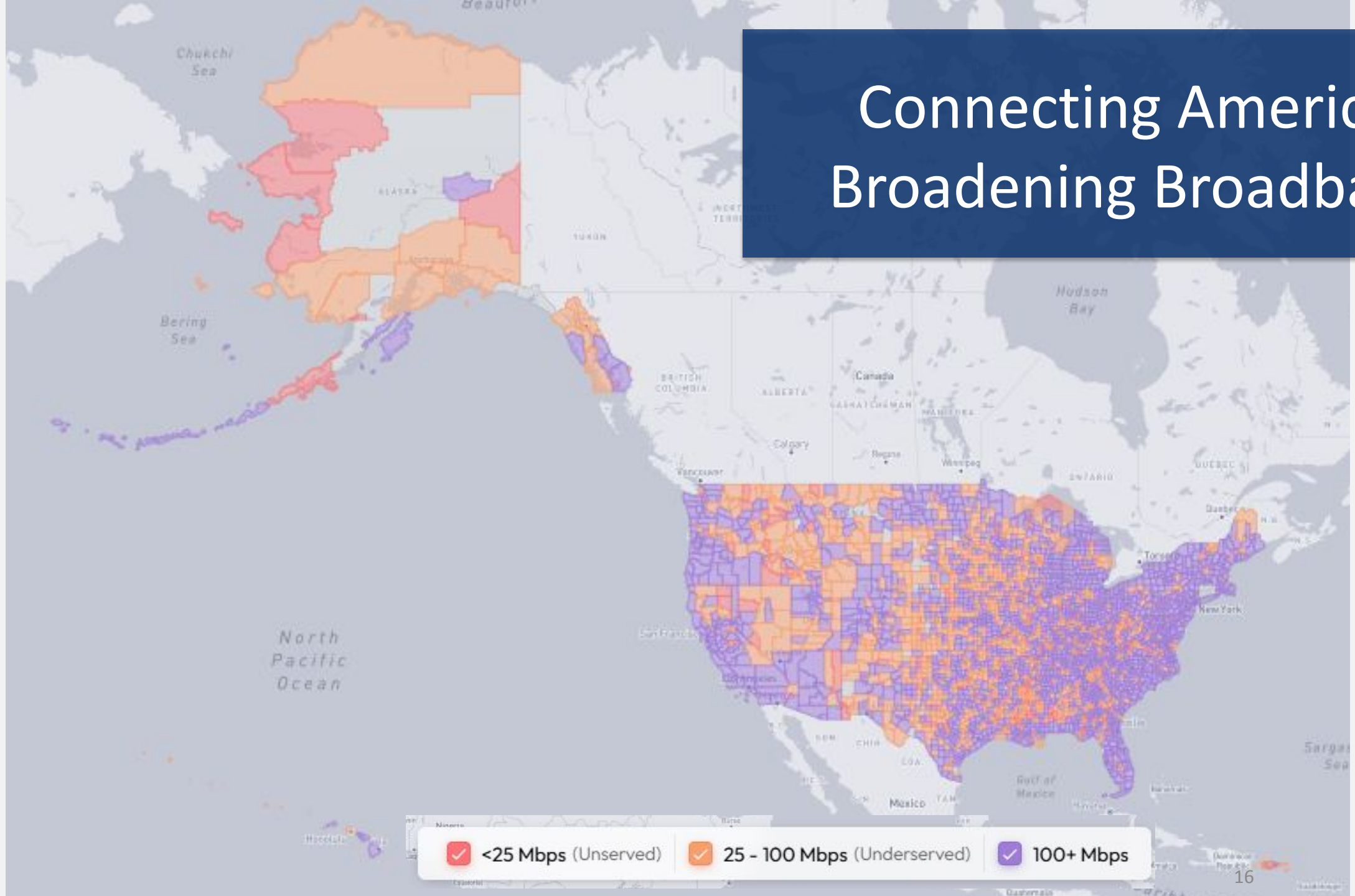
Dexcom Stelo (OTC)



Home and Hospital Trends

- **Telehealth is expanding beyond traditional settings**
 - Inpatient telemedicine adoption accelerating (Tele-ICU, smart rooms)
 - Home and community-based care becoming standard practice
- **Technology Embedded**
 - Technology is increasing integrated into platform-based telehealth solutions (cloud, voice command)
 - Mobile connectivity critical for patient access
- **Patient-generated health data is growing in quality and clinical importance**
 - E.g. Continuous Glucose Monitors (CGMs) provide meaningful, actionable patient insights
 - Improved data visualization enhancing patient self-management and clinical care decisions

Connecting America- Broadening Broadband



Connecting America- Broadening Broadband

Common Broadband Challenges:

- High Latency (or “jitter”)
- Rate Limiting
- Inconsistent speeds
- High packet loss
- Excessive outages
- Lower than expected speeds

***Not every “experience”
problem is
network-caused.***

Connecting America- Broadening Broadband



Telehealth Usage

Telehealth is more widely adopted in areas with robust broadband.



Community Opinions

Varied satisfaction levels with broadband; some accept limitations, while others seek better options but can't find them.



Urban vs. Rural

Rural clinics are less likely to provide telehealth, limiting rural residents' healthcare options.



Barriers

Digital literacy, infrastructure reliability, and support shortages made rural telehealth less accessible.



Affordability

Cost barriers limit broadband access for many rural, low-income households, restricting reliable internet options.

Connecting America- Broadening Broadband

- Infrastructure being deployed
- Consumers and communities may be left behind
- More work can be done to explain
 - The basics of broadband connectivity
 - How to get the most from the connectivity you have

Connecting America- Broadening Broadband

- Infrastructure being deployed
- Consumers and communities may be left behind
- More work can be done to explain
 - The basics of broadband connectivity
 - How to get the most from the connectivity you have

What We've Seen: Summary

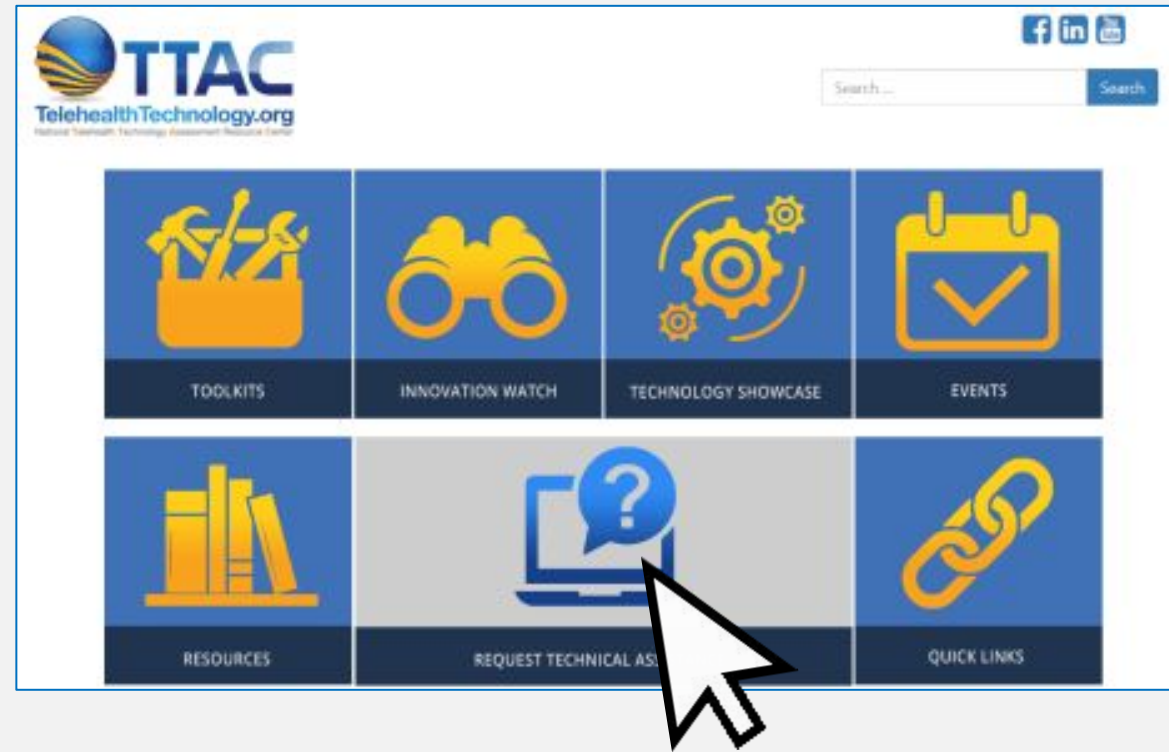
- **Evolving Endpoints**
 - Modular, portable, simplified tools
 - Wireless, cellular, satellite connectivity expanding access
- **AI Integration**
 - Valuable when clear roles defined
 - Governance must evolve rapidly
- **Care Locations: Home and Hospital**
 - Telehealth expanding beyond traditional clinic locations
 - Technology increasingly platform/system based
 - Patient generated data improving becoming more important
- **Connecting America- Broadband Access**
 - Connectivity is key to telehealth
 - Closing Gaps with infrastructure and education



Have Questions???

1 www.telehealthtechnology.org

2



3

Ask us your technology questions.

Thank You



Contact Us:

www.telehealthtechnology.org